

Section I: Introduction of Integrated Plan and SCSN

I.1. Introduction

For over a decade, the Miami-Dade County (MDC) Eligible Metropolitan Area (EMA) has been a national HIV/AIDS hot spot. Despite substantial progress with prevention and care efforts and significant improvements in health outcomes, the EMA continues to lead the state of Florida in the total number of people with HIV (HIV prevalence). A total of 30,074 people with HIV – almost 23% of the entire state’s population of people with HIV – lived in the EMA in calendar year (CY) 2024, the latest year of complete surveillance data available from the Florida Department of Health (FDOH).

Florida’s 2022 Statewide Coordinated Statement of Need (SCSN) identified four key areas of need in the EMA. The revised SCSN is expected to be released later in 2026 and the EMA’s Integrated Plan may be updated to reflect any identified changes to key areas.

Key Areas Identified in the 2022 SCSN:

- **HIV Prevalence:** Florida continues to have one of the highest rates of new HIV diagnoses in the United States.
- **Differences in Health Outcomes:** The epidemic continues to have a greater impact (poorer health outcomes) in Black/African American, Hispanic/Latino, and Haitian communities.
- **Barriers to Care:** Social determinants of health, including high rates of poverty, lack of transportation, food insecurity, housing instability, mental health issues, and substance use disorders add significant challenges to effective prevention and care efforts.
- **Service Gaps:** There is still a need for expanded access to pre-exposure prophylaxis (PrEP), mental health services, and means to address HIV-related population vulnerabilities.

For the past three years, the EMA has been guided by the 2022-2026 Integrated HIV Prevention and Care Plan (2022-2026 Plan) goals. The Miami-Dade HIV/AIDS Partnership (Partnership), the EMA’s Ryan White Program Planning Council, has taken the lead on 2022-2026 Plan evaluation, monitoring, updating, and reporting. The Partnership’s Strategic Planning and Prevention Committees have reviewed data and further evaluated and refined the activities. The committees meet independently and as a combined group, known as the Joint Integrated Plan Review Team (JIPRT).

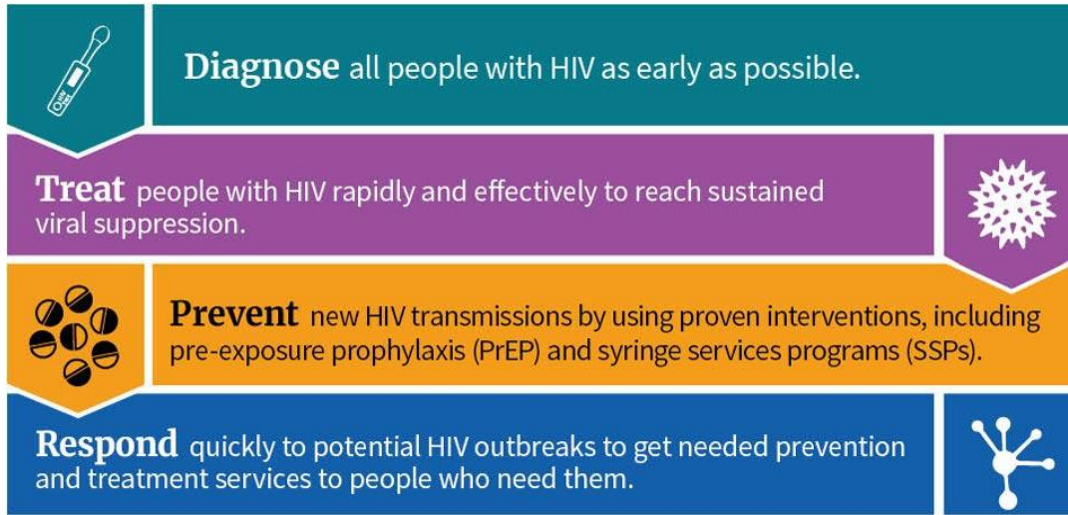
Both qualitative and quantitative data were used in the 2027-2031 Integrated HIV Prevention and Care Plan (Plan) to describe the impact of HIV in the EMA; determine service gaps and barriers to care; identify prevention and treatment areas; as well as refine goals and objectives to ensure access to HIV prevention and care across the service delivery system, as detailed in **Section III: Contributing Data Sets and Assessments**, of this Plan (see below).

This Plan is structured around the overarching goals of the National HIV/AIDS Strategy (NHAS). It also incorporates the four pillars of the Ending the HIV Epidemic initiative (EHE), the key areas identified in the Statewide Coordinated Statement of Need (SCSN), and the Ryan White Program’s 2030 goals and strategies. These elements are reflected throughout both the Plan’s Goals and Objectives and the Situational Analysis sections. Although the NHAS is no longer included as required guidance for the 2027–2031 Plan, we remain committed to structuring this Plan around the national objectives supported by CDC and HRSA. Accordingly, our focus continues to include:

- Preventing the transmission of HIV.
- Strengthening health outcomes for people with HIV who are engaged in care.
- Addressing and reducing inequities in HIV-related outcomes.
- Promoting coordinated, collaborative efforts across partners to more effectively respond to the HIV epidemic.

The 2027-2031 Plan goals also evolved to align with the Four Pillars of Ending the HIV Epidemic (EHE) in the U.S.:

The Four Pillars of EHE



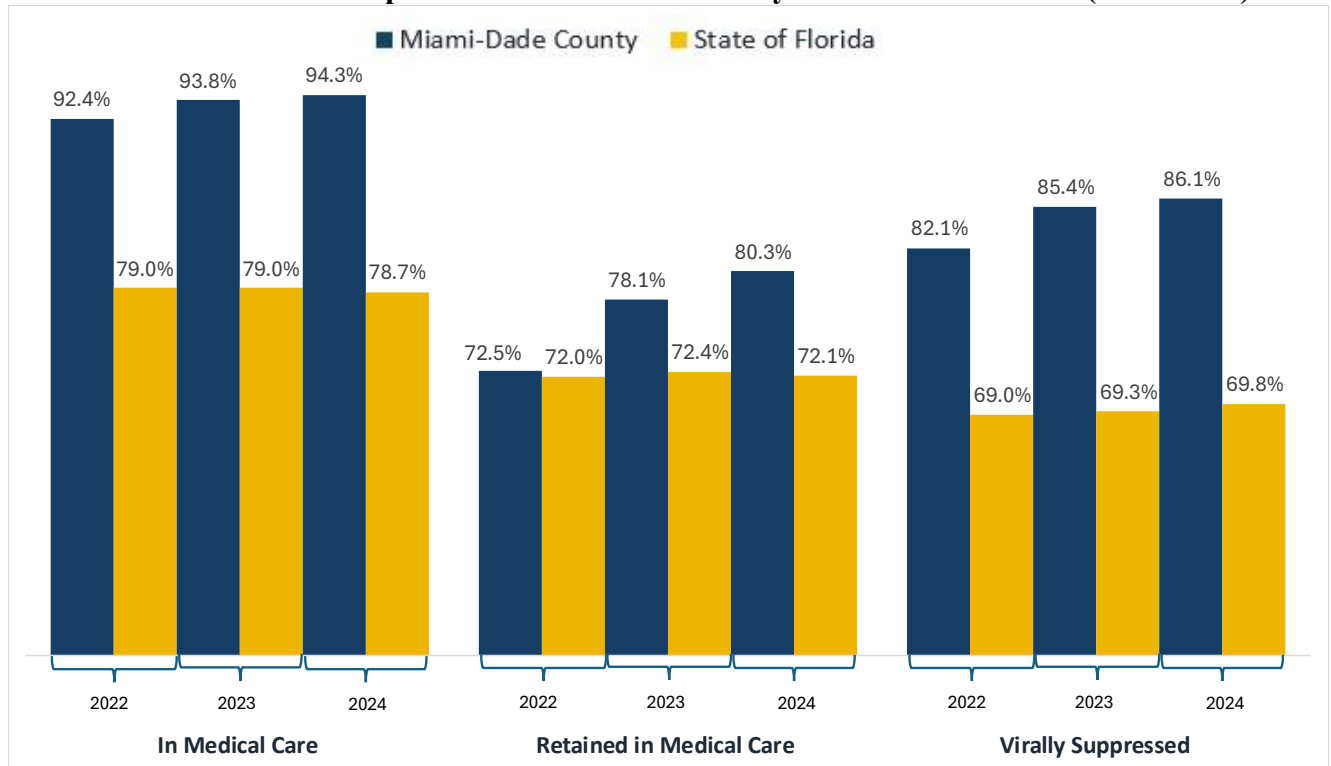
This Plan also incorporates the flexibilities of the EHE Initiative to advance the Ryan White Program 2030 goals. These goals emphasize continuing high-quality care for current Ryan White Program clients while expanding access to HIV care for people who are out of care or not virally suppressed, ensuring that no one is left behind in efforts to end the HIV epidemic. Continued progress depends on reaching people with HIV who are not engaged in care and supporting HRSA HAB’s vision to strengthen partnerships, focus interventions, and engage the HIV community.

Key Ryan White Program 2030 goals and strategies reflected in this Plan include:

- Rapid initiation of HIV treatment;
- Community-based outreach;
- Treatment as prevention;
- Leveraging partnerships; and
- Using data-driven approaches to identify populations with the greatest unmet needs.

Additionally, HIV Care Continuum data are monitored and continue to show progress for RWHAP clients, particularly in comparison to state trends, as shown below.

HIV Care Continuum Comparison: Miami-Dade County and State of Florida (2021–2024)



Representatives from the Partnership and the Miami-Dade County Office of Management and Budget Grants Coordination/Ryan White Program – the Ryan White Program Part A/Minority AIDS Initiative and EHE Recipient (the Recipient), serve on the Florida Comprehensive Planning Network (FCPN); and Partnership staff serve on the Statewide Integrated HIV Prevention and Care Plan (IPC) Workgroup and the Integrated HIV/AIDS Planning Technical Assistance Center (IHAP TAC) Advisory Board. Regular reporting and feedback on statewide updates relevant to local planning and program administration were intended to be included in the 2027-2031 Plan development. However, FDOH’s Statewide Integrated Planning group disbanded abruptly in March 2026 and there have been no further communications about the Statewide Plan; and the FCPN meeting scheduled for May 2026 was also abruptly canceled and has not yet been rescheduled.

This Plan is truly a living document which will continue to be monitored for updates to meet changing legislative requirements, respond to local policy changes, and consider the implications of new data as they become available. Responsibility for monitoring and reporting on Plan progress will continue to be a collaboration between the Partnership, the Recipient, the Florida Department of Health in Miami-Dade County (FDOH-MDC), the local prevention funding grantee, and other stakeholders as identified in this Plan.

I.1.a. Approach to Preparing the Integrated Plan

This 2027-2031 Plan modifies and enhances the existing 2022-2026 Plan, with additional documents as needed. Contributors to the 2027-2031 Plan development, monitoring, and updating include Ryan White Program clients, peer educators/navigators, and other community advocates with HIV; and representatives from Ryan White HIV/AIDS Program (RWHAP) Parts A, B, C, and D; the AIDS Drug Assistance Program (ADAP); FDOH-MDC Community Mobilization Workgroups; the Florida Agency for Health Care Administration (Medicaid); the Recipient; FDOH-MDC; the Partnership; and other collaborators as detailed in **Section II: Community Engagement and Planning Process**, of this Plan (see below). Throughout the development process, the 2027-2031 Plan was presented to the JIPRT and other Partnership committees at well-advertised, public meetings. All meeting documents, including meeting minutes, Plan drafts, supporting documents referenced in the Plan, and relevant presentations, are posted on the Partnership's website, www.PartnershipMiami.org. The Partnership approved the final draft of the 2027-2031 Plan in June 2026.

I.1.b. Documents Submitted to Meet Requirements

Data were drawn from the source documents listed below. Hyperlinks are provided for items available on www.PartnershipMiami.org or elsewhere online.

- [2022-2026 Integrated HIV Prevention and Care Plan for Miami-Dade County](#);
- [2022-2026 State of Florida Integrated HIV Prevention and Care Plan](#);
- [2024 Annual Report – HIV in Miami-Dade County, prepared by the Partnership](#);
- [2025 Annual Partnership Needs Assessment](#);
- [2025 State of Florida HIV Care Needs Survey for Area 11a](#); provided by The AIDS Institute;
- [CDC/HRSA 2027-2031 Integrated Plan Guidance \(February 2025\)](#);
- [Data on service gaps, provided by the FDOH-MDC and the RWHAP](#);
- [FDOH Epidemiological data, CY 2024](#);
- [Florida Community Health Assessment Resource Tool Set \(CHARTS\)](#);
- [HIV and STD testing data provided by the FDOH-MDC](#);
- [Letter of Concurrence \(see Section VII of this Plan, below\)](#);
- [Results from listening sessions, interviews, community input sessions, and online surveys](#);
- [RWHAP Client Satisfaction Survey data provided by BSR for 2022-2025](#);
- [RWHAP utilization data provided by BSR, 2022-2025](#);
- [The Health Council of South Florida District 11 Health Profile \(January 2025\)](#); and
- [Work Plan CDC-RFA-PS20–2010, Integrated HIV Programs for Health Departments to Support Ending the HIV Epidemic in the United States, FDOH-MDC](#).