

New Member Orientation

*Part II: Data Elements and
Planning Tools
Revised October 2025*

Slides prepared by Behavioral Science Research Corp.



New Member Orientation Objectives-Part II

Familiarize new Partnership members with some HIV related data elements and how to use them.



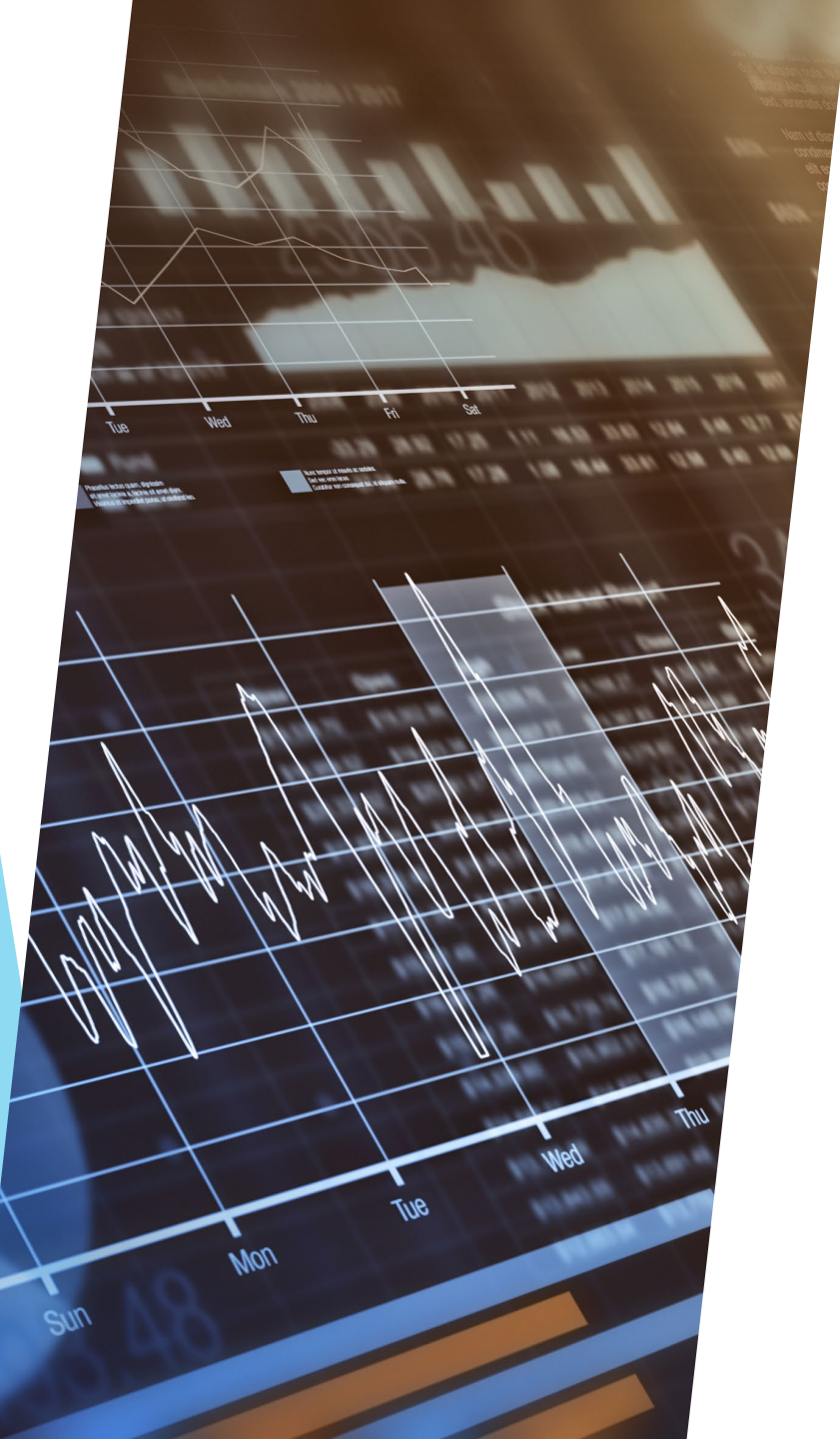
Data Illustrated

Can be presented various ways (charts, tables, pies, etc.)

Data



- ▶ What are the sources?
- ▶ Are there any patterns?
 - ▶ Do numbers go up?
 - ▶ Do numbers go down?
- ▶ How can I use this data?



Epi Data

Number of people living with a disease.

A photograph of laboratory glassware, including several glass vials and test tubes containing various colored liquids (yellow, green, blue, red), arranged on a reflective surface. The background is blurred, showing more glassware and colorful liquids.

Epidemiologic Profile

- ▶ Describes the HIV Epidemic in the Miami-Dade service area.
- ▶ Focuses on the social and demographic groups most affected by HIV and the behaviors that can transmit HIV.
- ▶ Data are provided by the Florida Department of Health
- ▶ Estimates the number and characteristics of persons with HIV who know their status but are not in care (unmet need) and those who are unaware of their HIV status.

“Epi” Terms



Incidence - the number of new cases of a disease in a population during a defined period of time - such as the number of new HIV cases in Miami-Dade County as of December 31 of the reference year.



Incidence rate - The frequency of new cases of a disease that occur per unit of population during a defined period of time - such as the rate of new HIV cases per 100,000 in Miami-Dade County as of December 31 of the reference year.

“Epi” Terms (continued)



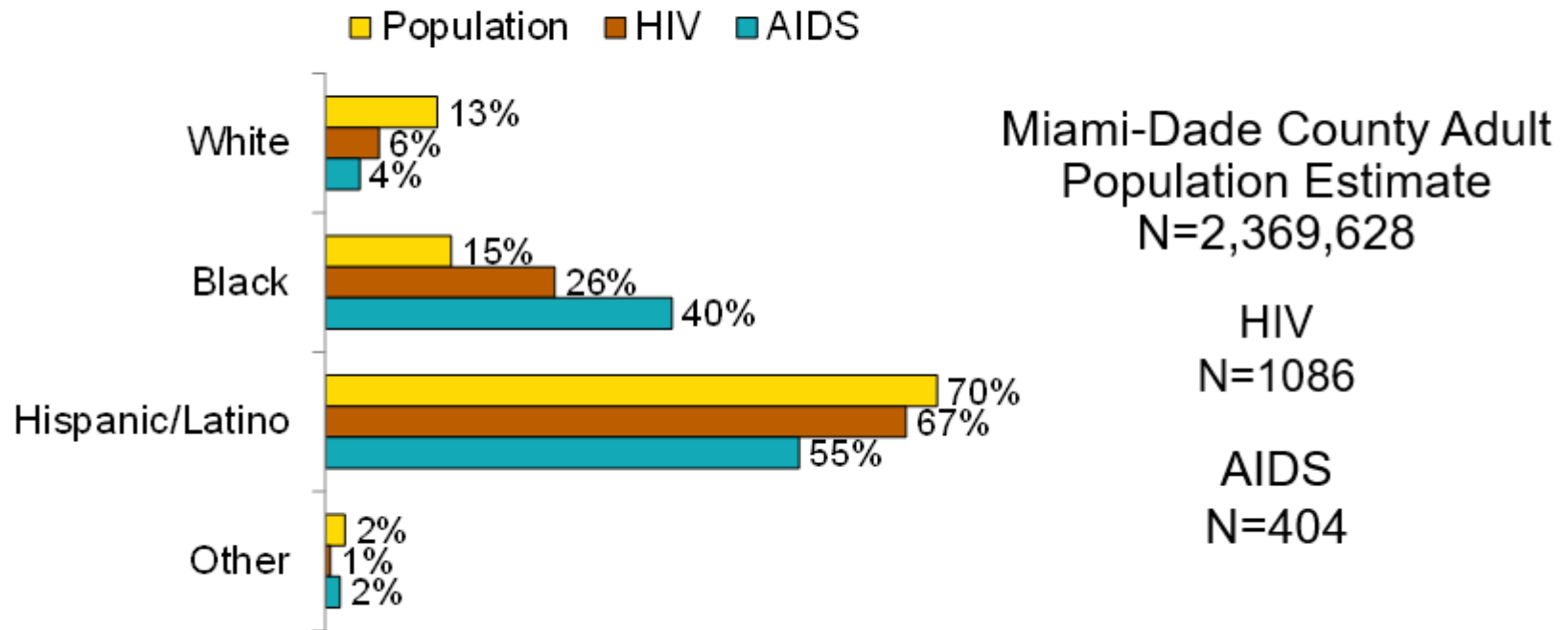
Prevalence - The total number of people in a defined population with a specific disease or condition at a given time - such as the total number of people diagnosed with HIV in Miami-Dade County as of December 31 of the reference year.



Prevalence rate - The total or cumulative number of cases of a disease per unit of population as of a defined date - such as the rate of HIV cases per 100,000 population diagnosed in Miami-Dade County as of December 31 of the reference year.

Sample EPI Data Using a Bar Graph

Adult HIV and AIDS Diagnoses and Population by Race or Ethnicity, 2022, Miami-Dade County



Knowledge Check

What entity generates the Epi Profile data?

- ▶ A. Provide Enterprises
- ▶ B. ACMS
- ▶ C. Florida Dept. of Health



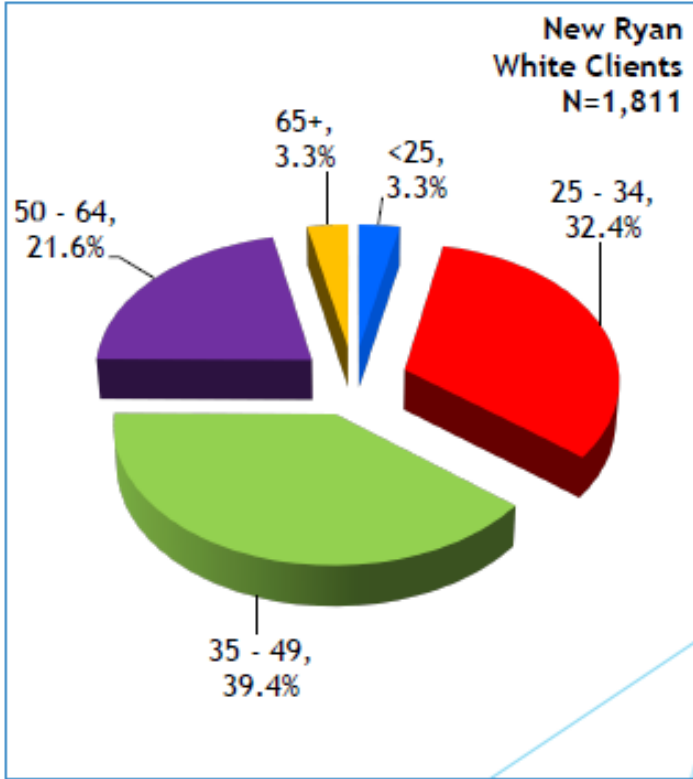
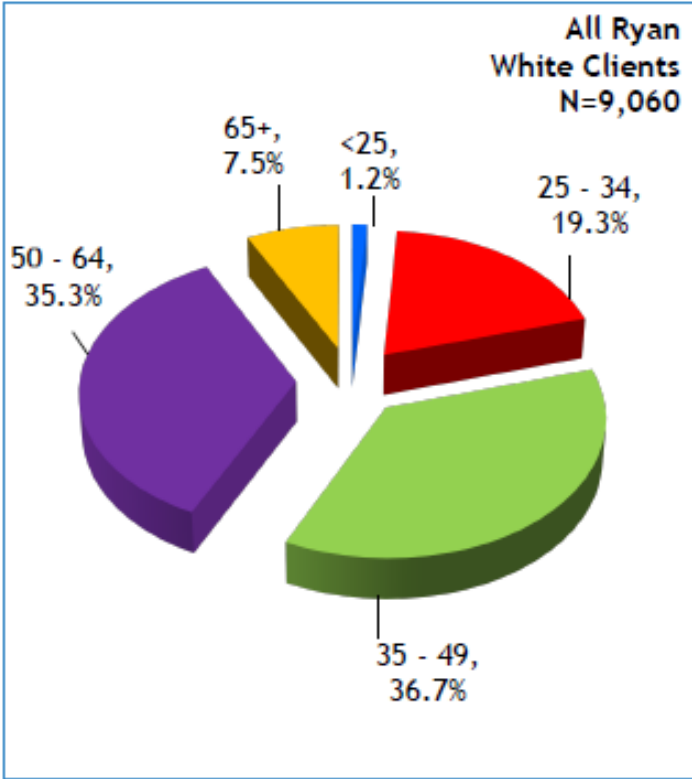


Demographics

Statistical data relating to the population and particular groups within it.

Sample Demographics Using a Pie Graph

Age Distribution of New and Total Clients in Care Ryan White Program, FY 2023



Dashboard Cards

Tool to visualize utilization and other funding data.



Sample Utilization Using a Chart

Total Number of Unduplicated Clients Served by Service Category (Alphabetic listing)

SERVICE CATEGORIES	FY 2018	FY 2019	FY 2020	FY 2021	FY 2022	FY 2023
Ryan White Program TOTAL	9,578	9,031	8,127	8,411	8,590	9,060
AIDS Pharmaceutical Assistance (Local)	697	605	185	183	157	20
Emergency Financial Assistance	N/A	N/A	N/A	N/A	N/A	N/A
Food Bank	701	715	735	712	1,130	1,339
Health Insurance Premium & Cost Sharing Assist	1,307	1,335	1,125	1,255	1,440	1,699
Medical Case Management, inc. Treatment Adherence (includes Peer Support)	8,496	8,116	7,378	7,842	8,085	8,573
Medical Transportation Services	638	720	94	645	743	1,018
Mental Health Services	327	274	95	121	107	120
Oral Health Care	3,381	3,170	1,711	2,237	2,577	2,730
Other Professional Services - Legal Services	76	66	48	44	103	89
Outpatient/Ambulatory Health Services	5,447	5,317	4,281	4,422	4,540	4,547
Outreach Services	624	472	130	116	158	240
Substance Abuse Services Outpatient	115	55	0	17	22	10
Substance Abuse Services (Residential)	169	95	70	66	72	74

Sample Dashboard Card Using Tables

CORE SERVICE: AIDS PHARMACEUTICAL ASSISTANCE

Ranking, Allocation, and Direct Services Expenditure History

Fiscal Year	Final Expenditure	Category Expense as %
FY 2018	\$21,934,627.17	0.39%
FY 2019	\$22,984,844.87	0.25%
FY 2020	\$17,660,128.37	0.30%
FY 2021	\$19,018,258.46	0.02%
FY 2022	\$22,372,383.35	0.02%
FY 2023	\$23,801,341.37	0.005%

Fiscal Year	Final Allocation	Final Expenditure	% Spent
FY 2018	\$237,000.00	\$86,209.75	36.38%
FY 2019	\$187,000.00	\$57,843.29	30.93%
FY 2020	\$66,007.00	\$5,993.21	9.08%
FY 2021	\$83,595.00	\$4,379.02	5.24%
FY 2022	\$84,492.00	\$3,954.10	4.68%
FY 2023	\$3,455.00	\$1,109.57	32.11%

Fiscal Year	Part A Ranking	Part A Final Allocation	Part A Final Expenditure	% Spent
FY 2018	4	\$137,000.00	\$81,547.76	59.52%
FY 2019	4	\$87,000.00	\$52,697.84	60.57%
FY 2020	3	\$66,007.00	\$5,993.21	9.08%
FY 2021	9	\$83,595.00	\$4,379.02	5.24%
FY 2022	4	\$84,492.00	\$3,954.10	4.68%
FY 2023	3	\$3,455.00	\$1,109.57	32.11%

Fiscal Year	MAI Ranking	MAI Final Allocation	MAI Final Expenditure	% Spent
FY 2018	3	\$100,000.00	\$4,661.97	4.66%
FY 2019	7	\$100,000.00	\$5,145.45	5.15%
FY 2020	N/A	N/A	N/A	N/A
FY 2021	N/A	N/A	N/A	N/A
FY 2022	N/A	N/A	N/A	N/A
FY 2023	N/A	N/A	N/A	N/A

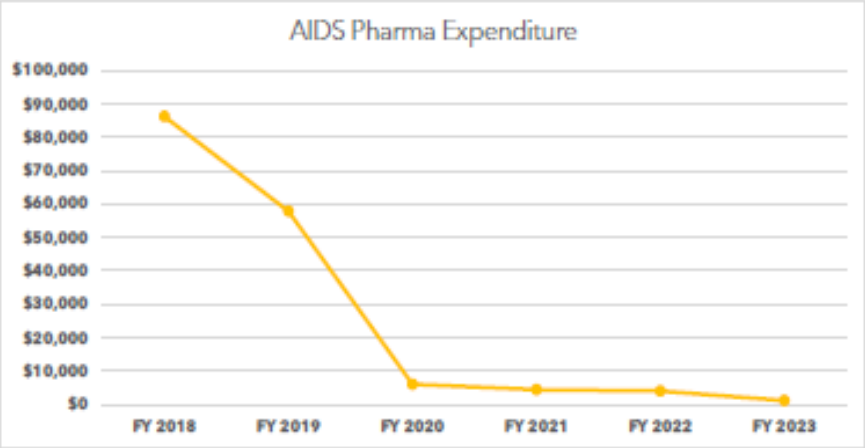
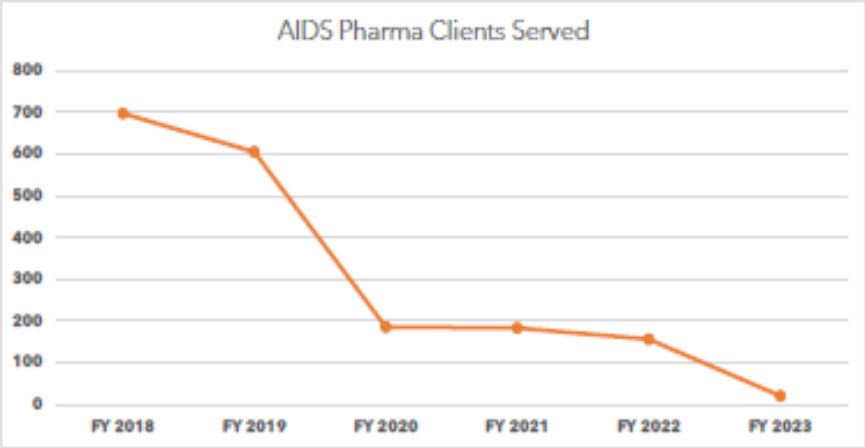
Notes:

Expenditures continue on a downward trend because most clients access the ADAP program for this service. FY 2023 has the lowest number of clients served and expenditures.

Sample Dashboard Card Using Graph and Tables

Service Program

Limitations: 400% FPL



Fiscal Year	RW Clients	Clients Served	Served as % RW Clients	Expenditure	Avg Per Client
FY 2018	9,578	697	7.3%	\$86,210	\$124
FY 2019	9,031	605	6.7%	\$57,843	\$96
FY 2020	8,127	185	2.3%	\$5,993	\$32
FY 2021	8,420	183	2.2%	\$4,379	\$24
FY 2022	8,590	156	1.8%	\$3,954	\$25
FY 2023	9,060	20	0.2%	\$1,110	\$56

Other Funding

Non-Part A funding in the community for persons living with HIV.



Sample Other Funding Streams Using a Chart

Other Funding Streams 2023

	Funder	Expended	Number of Clients	Cost per Client
1	ADAP	\$26,005,586	4,589	\$5,667
2	General Revenue	\$351,172	446	\$787
3	Medicaid	\$112,742,680	6,121	\$18,419
4	Part C	\$30,873	N/A	N/A

Other Funding Streams 2024

	Funder	Expended	Number of Clients	Cost per Client
1	ADAP	\$20,127,184	4,672	\$4,308
2	General Revenue	\$313,605	323	\$971
3	Medicaid	\$117,295,422	6,878	\$17,054
4	Part C	\$33,225	N/A	N/A

Care Continuum

Model that outlines the steps/stages that people with HIV go through whose goal is viral suppression.*

*Ending the Epidemic



Ryan White Program HIV Care Continuum Definitions



RWP Client

Ryan White Program clients who received at least one Ryan White Part A or MAI –funded service in the fiscal year (FY 2024: 03/01/2023 – 02/29/2024).



Newly-diagnosed persons with HIV, who were linked to HIV medical care anywhere in Miami-Dade County. Data from Florida Department Of Health (FDOH) Early Identification of Individuals with HIV/AIDS (EIIHA), CY 2023.



Active Ryan White Program clients receiving one or more medical visits with any Ryan White Program provider with prescribing privileges, Viral Load test, or medical visit copay, during the 12-month reporting period



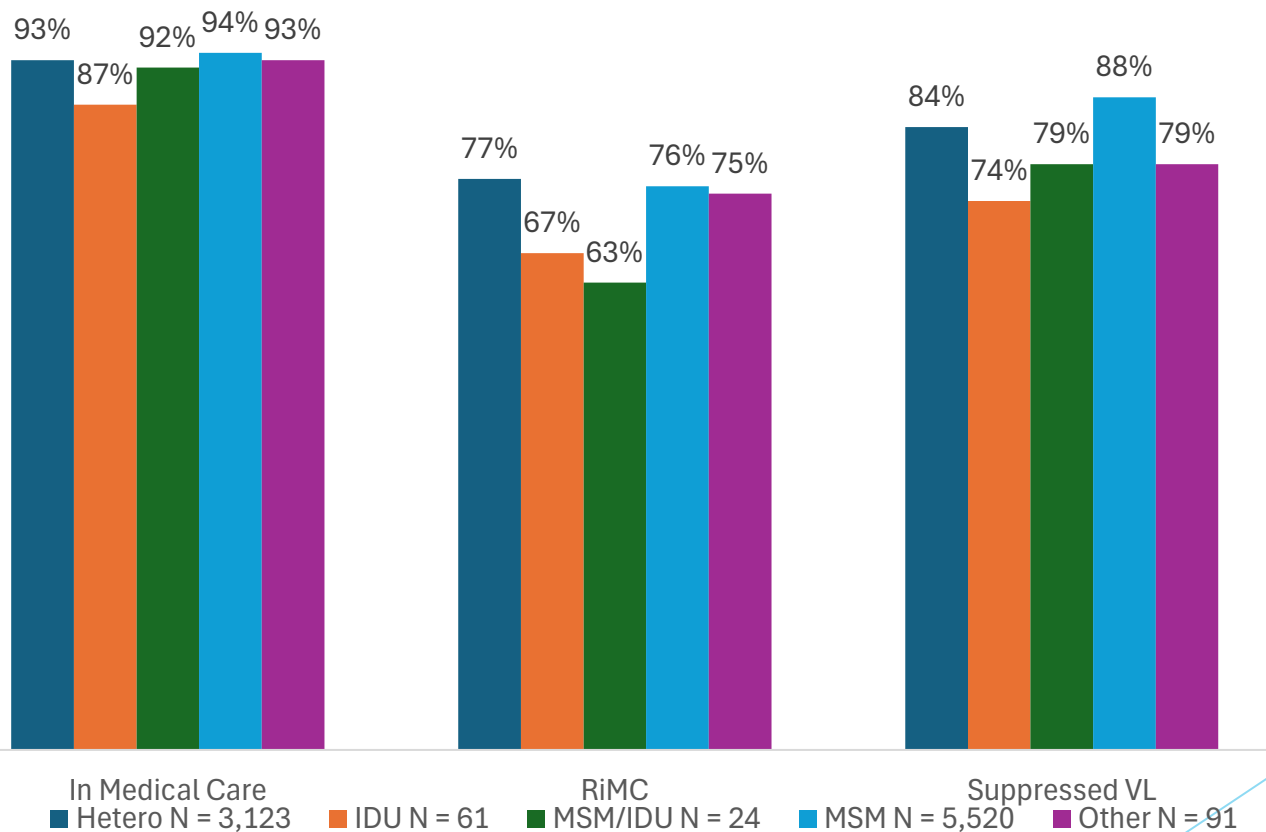
Active Ryan White Program clients receiving two or more billed medical visits with a Ryan White Program provider, or Viral Load test, or medical visit copay, at least 90 days apart, during the 12-month reporting period (FY 2024).



Active Ryan White Program clients with a documented suppressed Viral Load (<200 copies /mL) in the most recently reported lab test.

Sample HIV Care Continuum Using a Bar Graph

Ryan White Program HIV Care Continuum by Initial Exposure, FY 2023



Knowledge Check

Which data element reviewed provides information on other funding?

- ▶ A. HIV Care Continuum
- ▶ B. Demographics
- ▶ C. Treatment Cascade
- ▶ D. Dashboard Cards



Priorities



Priorities Using a Table

Ryan White Part A Program Service Categories FY 2025

Ryan White Part A Priority Ranking 2025-2026

Ranking	Services
1	AIDS Drug Assistance Program (ADAP) Treatment [C]
2	Medical Case Management, including Treatment Adherence Services [C]
3	Outpatient/Ambulatory Health Services [C]
4	Oral Health Care [C]
5	AIDS Pharmaceutical Assistance (Local Pharmacy Assistance Program) [C]
6	Food Bank/Home-Delivered Meals [S]
7	Mental Health Services [C]
8	Substance Abuse Outpatient Care [C]
9	Health Insurance Premium and Cost-Sharing Assistance for Low-Income Individuals [C]
10	Medical Transportation (Vouchers) [S]
11	Substance Abuse Services (Residential) [S]
12	Housing Services [S]
13	Outreach Services [S]
14	Emergency Financial Assistance [S]
15	Other Professional Services (Legal Assistance and Permanency Planning) [S]
16	Early Intervention Services [C]
17	Non-Medical Case Management [S]
18	Medical Nutrition Therapy [C]
19	Home and Community Based Health Care [C]
20	Psychosocial Support [S]
21	Health Education/Risk Reduction [S]
22	Home Health Care [C]
23	Child Care Services [S]
24	Hospice Services [C]
25	Linguistic Services [S]
26	Referral for Health Care and Support Services [S]
27	Rehabilitation Services [S]
28	Respite Care [S]

C=core services S= support services

Allocations



Allocations Using a Table

Ryan White Part A Program FY 2025 Flat Allocations

MIAMI DADE COUNTY RYAN WHITE PROGRAM (RWP) FY 2025 PART A FLAT FUNDING (FORMULA & SUPPLEMENTAL FUNDING) BUDGET			
FY 2025 RANKING	SERVICE CATEGORIES (ALPHABETIC ORDER)	FY 2025 RECOMMENDED ALLOCATION ¹	FY 2025 %
5	AIDS PHARMACEUTICAL ASSISTANCE [C]	\$88,255	0.41%
14	EMERGENCY FINANCIAL ASSISTANCE [S]	\$88,253	0.41%
6	FOOD BANK*/HOME DELIVERED MEALS [S]	\$529,539	2.44%
9	HEALTH INSURANCE PREMIUM AND COST SHARING FOR LOW- INCOME INDIVIDUALS [C]	\$595,700	2.74%
2	MEDICAL CASE MANAGEMENT, INC. TREATMENT ADHERENCE SERVICES [C]	\$5,869,052	27.01%
10	MEDICAL TRANSPORTATION [S]	\$154,449	0.71%
7	MENTAL HEALTH SERVICES [C]	\$132,383	0.61%
4	ORAL HEALTH CARE [C]	\$3,088,975	14.22%
15	OTHER PROFESSIONAL SERVICES (LEGAL SERVICES AND PERMANENCY PLANNING) [S]	\$154,449	0.71%
3	OUTPATIENT/AMBULATORY HEALTH SERVICES [C]	\$8,350,054	39.33%
13	OUTREACH SERVICES [S]	\$264,696	1.22%
8	SUBSTANCE ABUSE OUTPATIENT CARE [C]	\$44,128	0.20%
11	SUBSTANCE ABUSE SERVICES (RESIDENTIAL) [S]	\$2,169,744	9.99%
1	AIDS DRUG ASSISTANCE PROGRAM (ADAP) TREATMENTS [C]	Not Part A Funded	N/A
23	CHILD CARE SERVICES [S]	Not Part A Funded	N/A
16	EARLY INTERVENTION SERVICES [C]	Not Part A Funded	N/A
21	HEALTH EDUCATION/RISK REDUCTION [S]	Not Part A Funded	N/A
19	HOME AND COMMUNITY-BASED HEALTH SERVICES [C]	Not Part A Funded	N/A
22	HOME HEALTH CARE [C]	Not Part A Funded	N/A
24	HOSPICE [C]	Not Part A Funded	N/A
12	HOUSING [S]	Not Part A Funded	N/A
25	LINGUISTIC SERVICES [S]	Not Part A Funded	N/A
18	MEDICAL NUTRITION THERAPY [C]	Not Part A Funded	N/A
17	NON-MEDICAL CASE MANAGEMENT SERVICES [S]	Not Part A Funded	N/A
20	PSYCHOSOCIAL SUPPORT SERVICES [S]	Not Part A Funded	N/A
26	REFERRAL FOR HEALTH CARE AND SUPPORTIVE SERVICES [S]	Not Part A Funded	N/A
27	REHABILITATION SERVICES [S]	Not Part A Funded	N/A
28	RESPIRE CARE [S]	Not Part A Funded	N/A
	SUBTOTAL	\$21,729,679	100.0%

* Funded component of the service category.

[C]= Core Medical Service; [S] = Support Service

Sweeps and Rapid Reallocations



Sample Sweeps Requests Using a Table

MIAMI-DADE COUNTY - RYAN WHITE PART A
 FY 2022-23 (YR 32) FORMULA & SUPPLEMENTAL GRANT FUNDING ALLOCATIONS
 SWEEPS 2 (SW2) - FUNDING REALLOCATIONS

YR 32 RANKING ORDER ¹	SERVICE CATEGORIES	CORE/SUPPORT	(A) Original	(B) Reductions	(C) Retain	(D) Request	(E) Decision	(F) Total
			YR 32 ALLOCATIONS ²	SW2 RECOMMENDED REDUCTIONS	A-B	SW2 ADDITIONAL FUNDING REQUESTS	Requests made	PROPOSED ALLOCATIONS AFTER SW2 ³
1	MEDICAL CASE MANAGEMENT	CORE	\$ 5,869,052	\$ (200,000)	\$ 5,869,052	\$ 746,409	\$ 146,409	\$ 5,815,461
2	OUTPATIENT/AMBULATORY HEALTH	CORE	\$ 8,647,707	\$ (300,000)	\$ 8,547,707	\$ 929,495	\$ 29,495	\$ 8,577,172
3	MENTAL HEALTH SERVICE	CORE	\$ 132,305		\$ 132,305	\$ 10,309	\$ -	\$ 132,305
4	AIDS PHARMACEUTICAL ASSISTANCE	CORE	\$ 86,255	\$ (3,703)	\$ 84,492		\$ -	\$ 84,492
5	ORAL HEALTH CARE	CORE	\$ 3,088,975		\$ 3,088,975	\$ 531,373	\$ -	\$ 3,088,975
6	HEALTH INSURANCE SERVICES	CORE	\$ 595,700	\$ (259,924)	\$ 335,776		\$ -	\$ 335,776
7	SUBSTANCE ABUSE RESIDENTIAL	SUPPORT	\$ 2,189,744	\$ (200,000)	\$ 1,989,744		\$ -	\$ 1,989,744
8	FOOD BANK	SUPPORT	\$ 529,529		\$ 529,529	\$ 1,201,093	\$ 236,544	\$ 796,053
9	SUBSTANCE ABUSE OUTPATIENT CARE	CORE	\$ 44,128		\$ 44,128		\$ -	\$ 44,128
10	MEDICAL TRANSPORTATION	SUPPORT	\$ 154,449	\$ (3,791)	\$ 150,658	\$ 43,491	\$ 43,491	\$ 194,149
11	EMERGENCY FINANCIAL ASSISTANCE	SUPPORT	\$ 86,253	\$ (78,400)	\$ 9,853		\$ -	\$ 9,853
12	OUTREACH SERVICES	SUPPORT	\$ 264,696		\$ 264,696		\$ -	\$ 264,696
13	OTHER PROFESSIONAL SERVICES (LEGAL)	SUPPORT	\$ 154,449		\$ 154,449		\$ -	\$ 154,449
	SUBTOTAL		\$ 22,027,332	\$ (1,046,048)	\$ 20,981,494	\$ 3,842,169	\$ 455,879	\$ 21,437,363
	CLINICAL QUALITY MANAGEMENT		\$ 600,000		\$ 600,000	\$ 41,522	\$ 41,522	\$ 641,522
	ADMINISTRATION (10%) ⁴		\$ 2,453,209		\$ 2,453,209		\$ -	\$ 2,453,209
	GRAND TOTAL		\$ 25,080,541	\$ (1,046,048)	\$ 24,034,493	\$ 3,883,811	\$ 497,401	\$ 24,532,094

DIRECT SERVICES:

\$ (22,027,332) YR 32 RFP Award Allocation
\$ 21,478,886 YR 32 Direct Services Available Funds
\$ (548,447) DIFFERENCE (Reduction Needed)

YR 32 Current Award (Breakdown by Funding Source)

Formula Funding	\$ 16,141,386
Supplemental Funding	\$ 4,121,836
FY20 Supplemental	\$ 4,268,879
MAI Funding	\$ 1,069,480
FY20 MAI	\$ 1,633,771
YR 32 Total Award	\$ 27,235,352

NOTES:

- ¹ YR 32 ranking order is based on the Needs Assessment's allocation as provided in the FY 2022 Notice of Funding Opportunity (NOFO).
- ² Provisional award letters currently include contract base amounts approved by the Board of County Commissioners through Resolution NO. R-346-20, as a result of RFP RW-D6-0020. CORE Services Total = \$18,966,202 (85%); SUPPORT Services Total = \$3,361,130 (15%).
- ³ If the SW2 recommendations are adopted, the CORE Services Total = \$18,079,369 (84%); SUPPORT Services Total = \$3,358,974 (16%); CLINICAL QUALITY MANAGEMENT (2.6%).
- ⁴ Administration includes Partnership (Planning Council) and Program Support Costs.

MIAMI-DADE COUNTY - RYAN WHITE PART A
FY 2022-23 (YR 32) FORMULA & SUPPLEMENTAL GRANT FUNDING ALLOCATIONS
SWEEPS 2 (SW2) - FUNDING REALLOCATIONS

YR 32 RANKING ORDER ¹	SERVICE CATEGORIES	CORE/SUPPORT	(A-Original)	(B-Reductions)	(C-Balance)	(D-Requests)	(E-Decision)	(F-Totals)
			YR 32 ALLOCATIONS ²	SW2 RECOMMENDED REDUCTIONS	A-B	SW2 ADDITIONAL FUNDING REQUESTS	Requests made	PROPOSED ALLOCATIONS AFTER SW2 ³
1	MEDICAL CASE MANAGEMENT	CORE	\$ 5,869,052	\$ (200,000)	\$ 5,669,052	\$ 746,409	\$ 146,409	\$ 5,815,461
2	OUTPATIENT/AMBULATORY HEALTH	CORE	\$ 8,847,707	\$ (300,000)	\$ 8,547,707	\$ 929,465	\$ 29,465	\$ 8,577,172
3	MENTAL HEALTH SERVICE	CORE	\$ 132,385		\$ 132,385	\$ 10,309	\$ -	\$ 132,385
4	AIDS PHARMACEUTICAL ASSISTANCE	CORE	\$ 88,255	\$ (3,763)	\$ 84,492		\$ -	\$ 84,492
5	ORAL HEALTH CARE	CORE	\$ 3,088,975		\$ 3,088,975	\$ 531,372	\$ -	\$ 3,088,975
6	HEALTH INSURANCE SERVICES	CORE	\$ 595,700	\$ (259,924)	\$ 335,776		\$ -	\$ 335,776
7	SUBSTANCE ABUSE RESIDENTIAL	SUPPORT	\$ 2,169,744	\$ (200,000)	\$ 1,969,744		\$ -	\$ 1,969,744
8	FOOD BANK	SUPPORT	\$ 529,539		\$ 529,539	\$ 1,281,093	\$ 236,544	\$ 766,083
9	SUBSTANCE ABUSE OUTPATIENT CARE	CORE	\$ 44,128		\$ 44,128		\$ -	\$ 44,128
10	MEDICAL TRANSPORTATION	SUPPORT	\$ 154,449	\$ (3,761)	\$ 150,688	\$ 43,461	\$ 43,461	\$ 194,149
11	EMERGENCY FINANCIAL ASSISTANCE	SUPPORT	\$ 88,253	\$ (78,400)	\$ 9,853		\$ -	\$ 9,853
12	OUTREACH SERVICES	SUPPORT	\$ 264,696		\$ 264,696		\$ -	\$ 264,696
13	OTHER PROFESSIONAL SERVICES (LEGAL)	SUPPORT	\$ 154,449		\$ 154,449		\$ -	\$ 154,449
	SUBTOTAL		\$ 22,027,332	\$ (1,045,848)	\$ 20,981,484	\$ 3,542,109	\$ 455,879	\$ 21,437,363
	CLINICAL QUALITY MANAGEMENT		\$ 600,000		\$ 600,000	\$ 41,522	\$ 41,522	\$ 641,522
	ADMINISTRATION (10%) ⁴		\$ 2,453,209		\$ 2,453,209		\$ -	\$ 2,453,209
	GRAND TOTAL		\$ 25,080,541	\$ (1,045,848)	\$ 24,034,693	\$ 3,583,631	\$ 497,401	\$ 24,532,094

DIRECT SERVICES:

\$ (22,027,332) YR 32 RFP Award Allocation
\$ 21,478,885 YR 32 Direct Services Available Funds
\$ (548,447) DIFFERENCE (Reduction Needed)

YR 32 Current Award (Breakdown by Funding Source)

Formula Funding	\$ 16,141,380	
Supplemental Funding	\$ 4,121,835	
FY'20 Supplemental	\$ 4,268,879	\$24,532,094
MAI Funding	\$ 1,089,480	
FY'20 MAI	\$ 1,623,771	
YR 32 Total Award	\$ 27,245,345	

NOTES:

¹ YR 32 ranking order is based on the Needs Assessment's allocation as provided in the FY 2022 Notice of Funding Opportunity (NOFO).

² Provisional award letters currently include contract base amounts approved by the Board of County Commissioners through Resolution NO. R-246-20, as a result of RFP RW-DS-0320. CORE Services Total = \$18,666,202 (85%); SUPPORT Services Total = \$3,361,130. (15%).

³ If the SW2 recommendations are adopted, the CORE Services Total = \$18,078,389 (84%); SUPPORT Services Total = \$3,358,974 (16%); CLINICAL QUALITY MANAGEMENT (2.6%).

⁴ Administration includes Partnership (Planning Council) and Program Support Costs.

Sweeps Example

- The Care and Treatment Committee reviewed the Sweeps Table requesting \$1,400,000 in **three** service categories.
- A decision was made to place the funding in **four** of the highest need categories at varying levels:
 - Outpatient Medical Care, \$700,000
 - Medical Case Management, \$400,000
 - Oral Health Care, \$200,000
 - Prescription Drugs, \$100,000

How would you word a motion on the Sweeps recommendations?

Motion to allocate Ryan White Program Part A Sweep #1 funds into four categories: \$700,000 to Outpatient Medical Care, \$400,000 to Medical Case Management, \$200,000 to Oral Health Care, and \$100,000 to Prescription Drugs.

Planning Tools and Information

- ▶ Your one stop for data, resources in the community, trainings, and events is www.PartnershipMiami.org!



The Partnership ▾ Services for People with HIV ▾ MCM Hub ▾ Quality Management ▾ News and Resources ▾ Calendars ▾ 🔍

Welcome to Partnership Miami.org!

Effective immediately and until further notice, the contents of these web pages are under review to comply with federal executive orders. This website may be updated further in the event the County receives a directive to do so from HRSA.

Welcome to the online home of the Miami-Dade HIV/AIDS Partnership (Miami-Dade County Ryan White Program planning council), the Clinical Quality Management (CQM) program, resources for people with HIV and service providers, and the bulletin board for HIV news and information in Miami-Dade County – *Community Newsletter*.

SERVING
9,316
people with HIV

Thank You for Your Time!

Contact Us for More Information!

Marlen Meizoso, M.A., Project Manager/Research Associate,
marlen@behavioralscience.com

Christina Bontempo, Project Manager/Community Liaison,
cbontempo@behavioralscience.com

Follow us on social media

www.facebook.com/HIVPartnership

www.instagram.com/hiv_partnership

Today's presentations will be posted online

<https://partnershipmiami.org/the-partnership-2/#orientation1>

